

CORBY

Lachlan façade



Cooper façade



Flinders façade



Barrington façade



Manning façade



Nepean façade



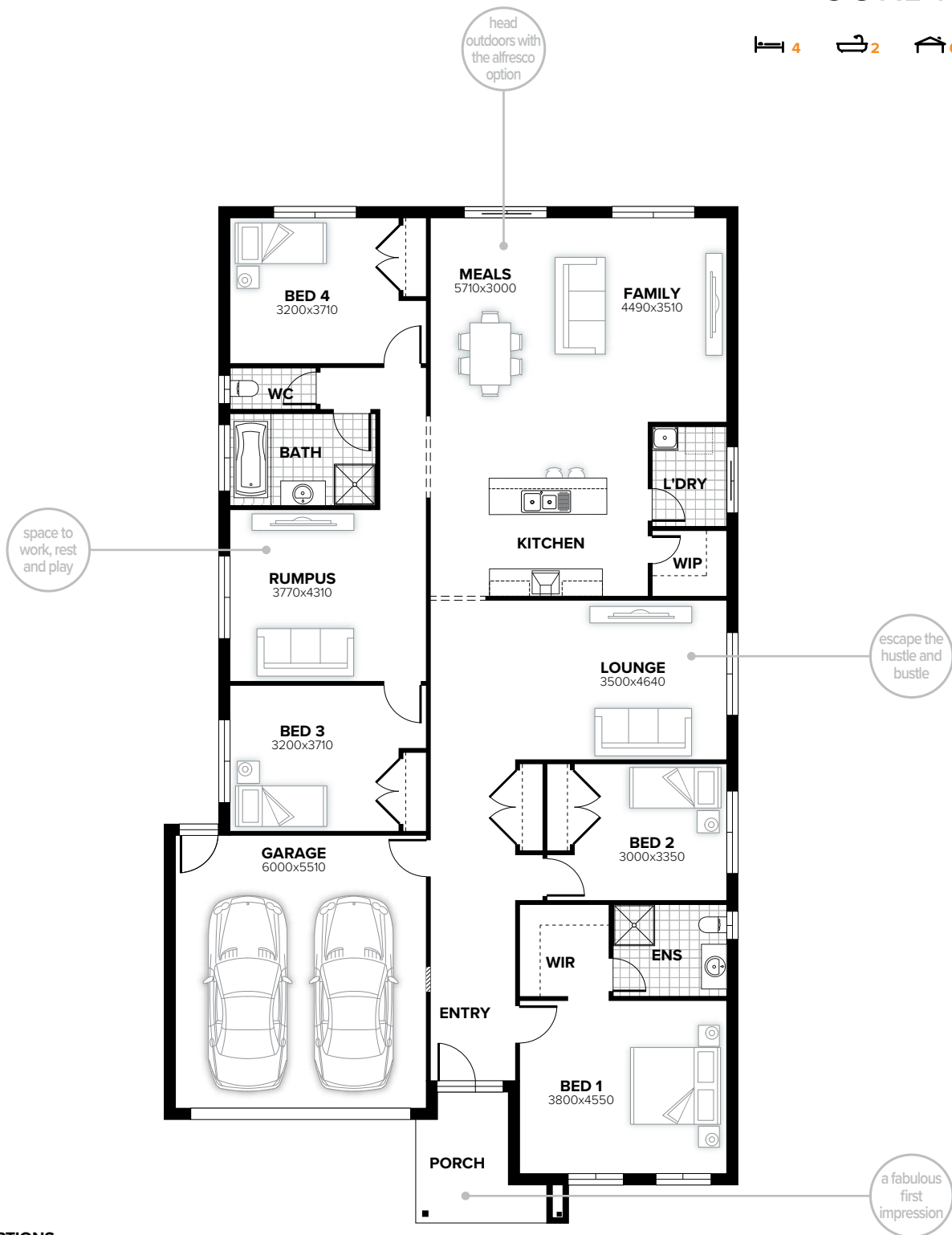
Bowman façade



All façade images are artist's impressions only. These images may contain internal or external upgrade items such as feature renders and timber look garage doors. Images contain items not supplied by Burbank, which include furniture, landscaping, fencing and external lighting. See your New Home Consultant for full specifications.

CORBY 249

 4
  2
  0
  2



FLOORPLAN OPTIONS

Want to put a personal touch on your home? Speak to your New Home Consultant about the exciting range of ready-to-go design options for this floorplan. Popular design options include:

- | | |
|----------------------------|--------------------------------|
| • Kitchen options | • Gas fireplace in lounge |
| • Relocate laundry | • Storage and workshop options |
| • Triple car garage option | • Alfresco option |

| | |
|-------------|--------|
| home width | 12.59m |
| home length | 22.31m |

| | | |
|--------------|------------------|----------------|
| residence | 205.95sqm | 22.17sq |
| porch | 6.69sqm | 0.72sq |
| garage | 36.25sqm | 3.90sq |
| total | 248.89sqm | 26.79sq |

Listed details based on Lachlan façade floorplan (illustrated)

Call 13 BURBANK Visit burbank.com.au

Burbank 
#noplacelikehome

*Copyright conditions. All photos and illustrations are representative only. Floor plans and specifications may be varied by Burbank without notice, the dimensions are diagrammatic only and a Building Contract with final drawings will display correct dimensions and detail. All designs are the property of Burbank and must not be used, reproduced, copied or varied, wholly or in part without written permission from an authorised Burbank representative. Copyright Burbank Australia (NSW) Pty Ltd. ABN 88 610 822 870. NSW BL 295627C. ACT BL 2016566.

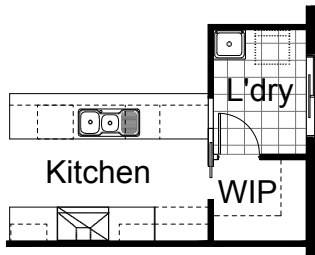
FLOORPLAN OPTIONS

CORBY 249

4 2 0 2

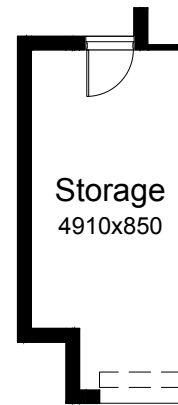
OPTION K1

Provide Kitchen upgrade with 1no. laminated open shelf above refrigerator space, 3no. 800mm base cupboards, 2no. 600mm overhead cupboards, 900mm upright oven with canopy range hood above, 1no. laminated DW provision, 1no. laminated MW provision with pot drawer below, 1no. 450mm drawers, 1no. 900mm base cupboard, 1no. 620mm cavity sliding door to WIP in lieu of standard 620mm flush panel hinged door, additional bench top and tiled splash back to suit and relocate Laundry flush panel hinged door to suit.



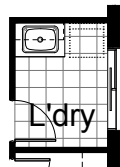
OPTION G1

Provide extension to Garage to create additional Storage area. Increases area by 4.48m². Increases width by 850mm.



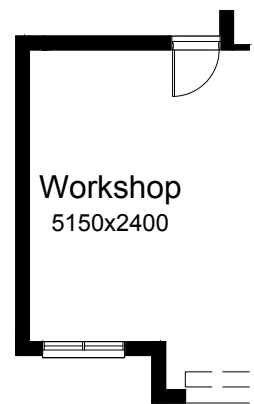
OPTION LD1

Provide Laundry upgrade with laminated insert trough, 1no. 800mm base cupboard, 1no. 800mm overhead cupboard and additional tiled splash back and bench top to suit.



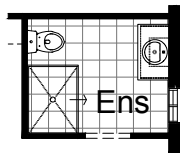
OPTION G2

Provide extension to Garage to create Workshop area including additional window to suit. Increases area by 13.51m². Increases length by 2400mm.



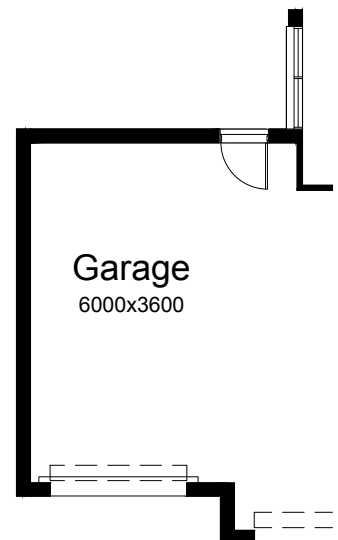
OPTION ENS1

Provide Ensuite upgrade with 900mm x 1220mm polymer shower base in lieu of standard 900mm x 900mm polymer shower base and 1no. 2057mm x 610mm aluminium sliding window in lieu of standard 1027mm x 610mm aluminium sliding window and relocate vanity and WC to suit.



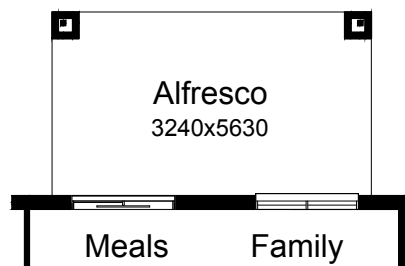
OPTION G3

Provide triple car Garage including additional roller door to front. Increases area by 24.26m². Increases width by 3600mm.



OPTION EP1

Provide Alfresco Option under dwelling roof line with structural concrete floor and additional 2/470mm x 470mm brick piers to rear of Family/Meals. Increases area by 18.24m². Increases length by 3240mm.



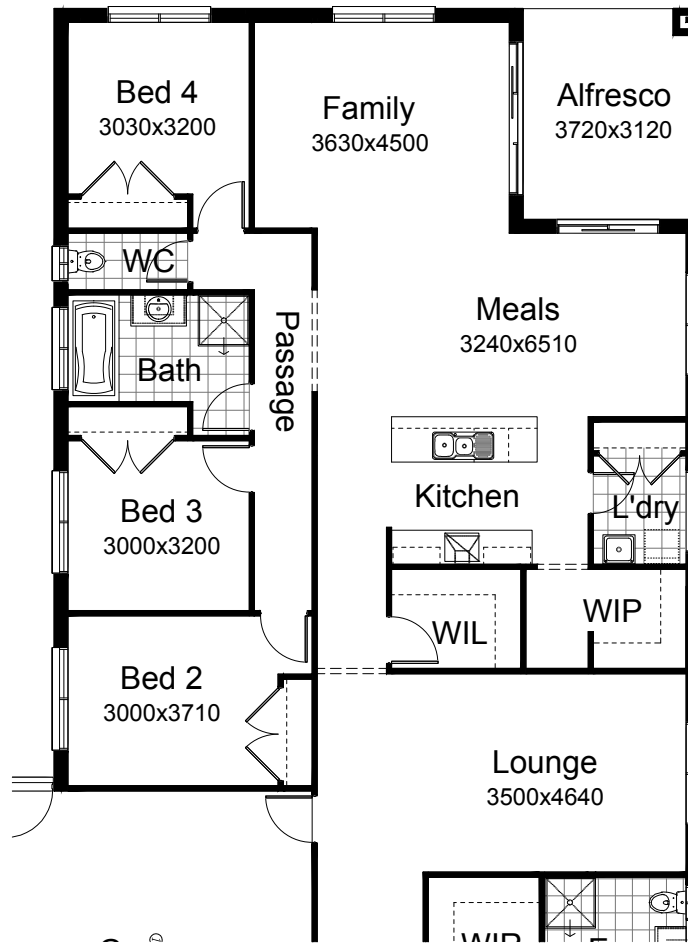
Call 13 BURBANK Visit burbank.com.au

Burbank 
#noplacelikehome

*Copyright conditions. All photos and illustrations are representative only. Floor plans and specifications may be varied by Burbank without notice, the dimensions are diagrammatic only and a Building Contract with final drawings will display correct dimensions and detail. All designs are the property of Burbank and must not be used, reproduced, copied or varied, wholly or in part without written permission from an authorised Burbank representative. Copyright Burbank Australia (NSW) Pty Ltd. ABN 88 610 822 870. NSW BL 295627C. ACT BL 2016566.

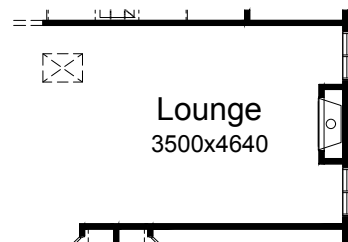
OPTION IP3

Provide alternative plan layout by deleting Rumpus and relocating Bedroom 2, Lounge, Kitchen, Walk in Pantry and Meals. Provide additional walk in linen with additional 1no. 820mm flush panel hinged door and 3no. 450mm deep shelves and delete 1no. 620mm hinged door to Walk in Pantry. Provide additional site built plaster lined linen cupboard with 2no. 720mm doors and additional shelving to Laundry. Provide Alfresco under dwelling roof line with 1no. 470mm x 470mm brick pier, additional 1no. 2110mm x 2690mm aluminium sliding door to Family and additional 1no. 2057mm x 1810mm aluminium sliding window to Meals. Provide 2no. 820mm hinged doors to Bedroom 4 robe and 2no. 820mm hinged doors to Bedroom 3 robes in lieu of standard 720mm wide door and relocate Bath and WC to suit.



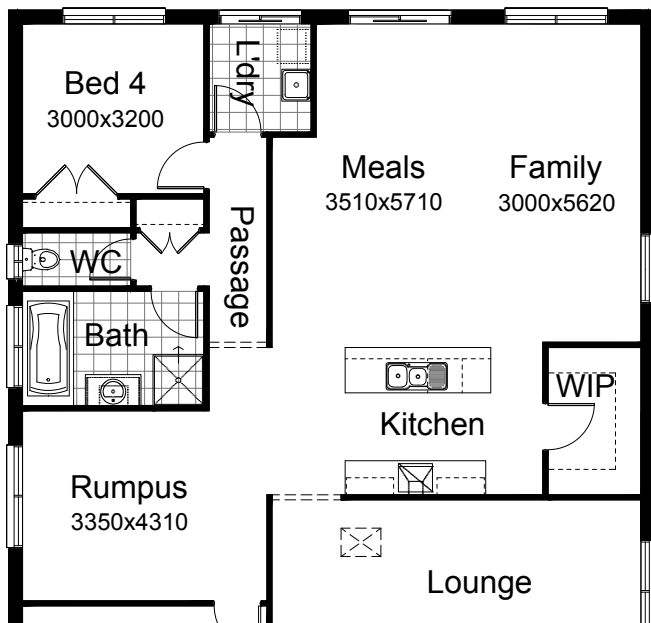
OPTION IP1

Provide Jetmaster SL-350 gas fireplace, 400mm off floor level in a 1400mm x 420mm boxed out plaster wall with a 4 sided black fascia to Lounge room side wall with additional 2no. 2057mm x 850mm aluminium sliding windows in lieu of standard 1no. 2057mm x 1810mm window.



OPTION IP2

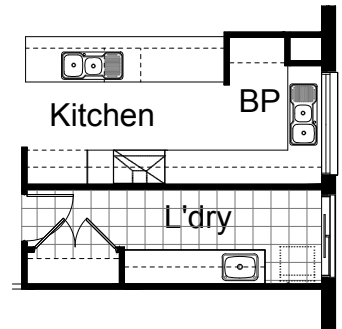
Provide alternative plan layout by relocating Laundry and Bed 4 robe and providing additional Linen cupboard with 3no. 450mm shelves and 2no. 520mm flush panel hinged doors and 1no. 2057mm x 1210mm aluminium fixed window to Family.



OPTION K3

Provide Butlers pantry option by deleting WIL and WIP and relocate Laundry to suit. Provide Laundry upgrade with site built plaster lined linen cupboard with 2no. 720mm flush panel hinged doors, 1no. 820mm flush panel hinged door in lieu of 1no. 720mm door, 3no. 450mm deep shelves, 3no. 800mm base cupboards, 3no. 800mm overhead cupboards and additional tiled splash back and bench top to suit. Provide Kitchen upgrade with additional 1no. laminated open shelf above refrigerator space, 1no. 450mm base cupboard, 3no. 900mm base cupboards, 1no. 800mm blind carcass with 1no. 350mm door, 2no. 800mm base cupboards, 1no. 600mm base cupboard, 1no. 450mm overhead cupboard, 3no. 900mm overhead cupboards, 1no. 900mm upright oven with 900mm wide retractable range hood over, 1no. 514mm x 1810mm aluminium fixed window, 1no. laminated microwave provision, 1no. dishwasher provision, 1no. 450mm wide cutlery drawers, 3no. 450mm deep shelves and additional tiled splash back and bench top to suit.

Note: Option only available with IP3



OPTION K2

Walk in Linen and relocate Walk in Pantry to suit. Provide 1no. 300mm base cupboard, 3No. 800mm base cupboards, 1No. 1050mm blind carcass with 1no. 600mm door, laminated end panel to refrigerator side including 1no. 920mm wide laminated open shelf above refrigerator space, 3No. 800mm overhead cupboards, 1no. 350mm overhead cupboard, additional single bowl and drainer sink, tiled splash back and bench top to suit.

Note: This Option is only available with Option IP3

